

SPA EASE



THE FUTURE OF HOT TUBS

Hot Tubs • Swim Spas • Chemicals • Filters • Covers
Cover Lifters • Treadmills • Accessories • Safety Rails

spaeasehottubs.com

SpaEASE

THE FUTURE OF HOT TUBS

The **SpaEASE** Brand was designed and is owned by Hot Tub Products LLC (HTP) a US company located in Connecticut since 2004. HTP is owned by the Tournas Family who created ThermoSpas Inc. in 1981, which went on to become the largest retailer of hot tubs in the world. The CEO of HTP in 2008 founded the International Hot Tub Association (IHTA) and was President for the first 2 years. The IHTA consisted of a board of directors that included Presidents and CEO's of virtually every major hot tub manufacturer in the US.

The organization helped raise the standards of hot tub production by focusing on energy efficiency and safety standards.

Today SpaEase Hot Tubs have raised the level of design and quality control, along with offering unique features found on no other hot tub brand.

Virtually every major component on a SpaEase Hot Tub, from the Acrylic Shell, Digital Control Panels, Heater, and even the Spa Pac (considered the engine to the spa) utilizes USA manufacturers. Even our HT brand of chemicals is manufactured in Connecticut and have been sold by HTP for over 20 years.



Visit www.hottubchemicals.com for the best answers on how to care for your spa. We are proud HT Chemicals & HT Filters were chosen as a model for this website.

We Don't Just Build Hot Tubs

We Provide Patented Products to Help Make Your Hot Tub Easier to Use, More Energy Efficient, and Safer to Own.

EASIER TO USE

CONVERT A LIFT

Automatic Cover Lift System



Simply Touch a Button, from in your home, and your hot tub or swim spa cover opens automatically.

ENERGY EFFICIENT

VacuSeal

Cover & Lift System



Our Patented Bottom Hinge seals your cover to your hot tub preventing heat loss which saves you money.

SAFER TO OWN

CONVERT A LIFT

Automatically Locks



Prevents children and any uninvited guests from entering spa. Also ideal for vacation and rental homes.

SAFER & EASIER

SpAEASE

Hot Tub Steps



Thick Rubber Treads for Safety and slide out drawers provide a convenient location for chemicals.

SAFER TO OWN

SpAEASE

Access Rails



Protecting You When You Enter Your Spa and More Importantly When You Exit.

SAFER & EASIER

VacuSeal

Easily Converts into a Canopy



Provides Protection from the Sun, and the Rain, and a little more Privacy from Your Neighbors.

No Other Hot Tub Manufacturer Provides Everything You Need for Your Spa



Beautiful Shells

We Only use Made in the USA Continuous Cast Acrylic (CCA)

The exterior surface is smooth to the touch, yet durable enough to resist stress cracking and easily withstand temperature changes from minus 50 degrees to up to 180 degrees Fahrenheit. CCA is a non-porous material which makes it simple to clean and hold its beauty for generations while requiring very little maintenance. Many competitors commonly use OAS plastic and inexpensive composite acrylics that can easily fade over time.

Built to Last a Lifetime

The Shell is the most important part of your spa. If virtually any other component should fail it could easily be replaced. If the Shell fails, most often you need to replace the entire spa.

To Thermoform SpaEase shells we use the most automated technology available today. And once it is formed, multiple layers of fiberglass, resin, and bonding agents are applied to protect your shell in virtually any environment.

SPECIALIZED ACRYLIC FORMING

Assures a uniform thickness on every shell

1ST LAYER VINYL ESTER RESIN

This layer is sprayed on the shell to increase adhesion of the resin to the acrylic, eliminating the risk of bubbling or delamination.

2ND LAYER OF VINYL ESTER RESIN W/FIBERGLASS

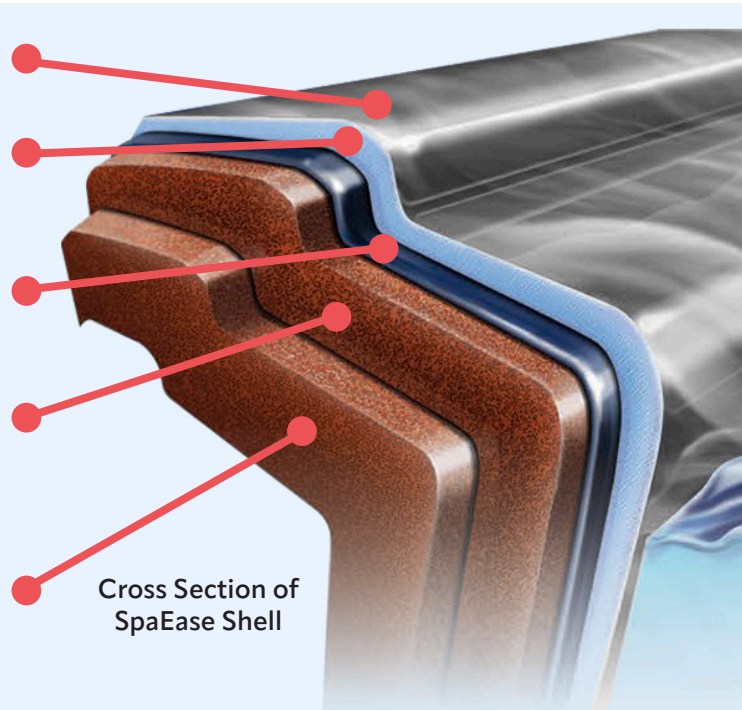
This layer is sprayed on the shell to increase its Durability, Impact Resistance and Flexibility.

FIBERGLASS MATTING

Fiberglass Matting is used in areas that requires special attention and additional strength such as the coping, footwell and hard to reach areas.

FIBERGLASS RESIN COMPOSITE

Our proprietary resin mixture allows more fiberglass content, creating increased structural integrity and strength.



Cross Section of SpaEase Shell

Elegant Cabinetry

Designed to Enhance Your Home

SpaEase Designer Cabinets capture the warmth and look of fine furniture yet they are environmentally friendly and unaffected by the weather. You will never need to sand, stain, or refinish your hot tub cabinet to retain its beauty. Just simply use a garden hose to spray clean it off.



Exterior Lighting to Match the Interior

On every corner, and along the entire perimeter, soft ambient lighting enhances the look of your spa and adds a degree of safety.

Available in 6 colors, or set it to fade very slowly from one to the other. Not to worry, it includes an automatic shut off feature.

Even when your spa is not in use, your cabinet lighting will enhance the look of your patio from inside your home.



PURPLE



AQUA



CANARY



RED

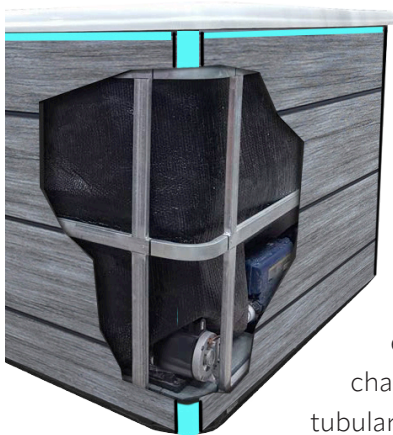


GREEN



BLUE

Stainless Steel Construction



The average hot tub weighs 800 lbs. and holds 300 gallons of water, which equates to over 3,200 lbs. of pressure on the frame. Our EverFrame is built with Tubular 304 Grade Stainless-Steel making it more stable and therefore will not expand, contract, twist, or warp in changing weather conditions. Being tubular allows it to absorb the weight load of the largest modern spa filled with water.

ABS w/Fiberglass Support



The base of your spa cabinet is highly dependent on both the life of your spa and the cost to operate it. Our unique Base is constructed with a rigid pan-base made from a tough ABS plastic, then strengthened with fiberglass, giving your base of your spa superb structural integrity. The addition of thick, reflective insulating foil acts as a thermal barrier, designed to eliminate the cold from penetrating the spa interior and helping to lower the cost of heating your spa.

More Energy Efficient Spa...

ThermoInsulation, Use of Co-Generated Heat, & Our Patented VacuSeal Cover Makes SpaEase the Most Energy Efficient Hot Tub.

THERMOINSULATION

VacuSeal Cover

Critically important for energy savings, VacuSeal covers beat industry standards for insulating efficiency & strength.

ThermoBoard

Our attractive ThermoBoard cabinet walls are built thicker than most competitors to maximize heat retention, efficiency and strength.

ThermoBlanket

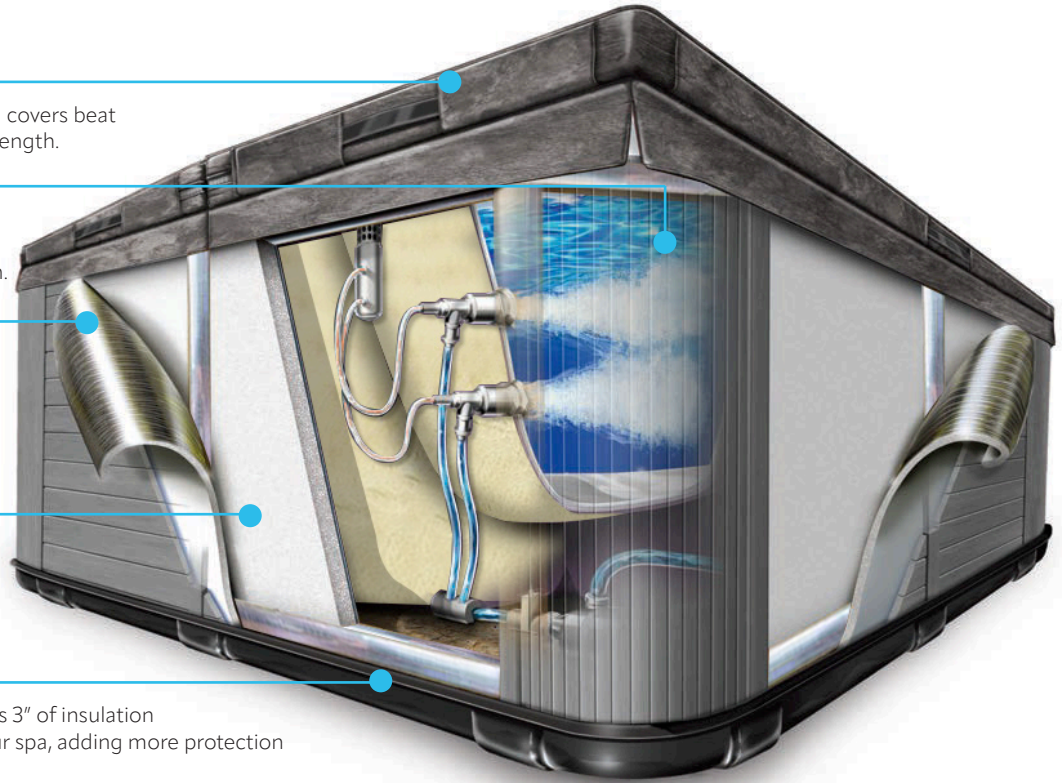
A highly rated insulating blanket is wrapped around all four walls to further help keep heat in & cool ambient air out. It also includes strong soundproofing properties for whisper quiet operation.

ThermoPanel

Thick 1" panels are form fitted on all four walls of the spa to add an additional third layer of insulation. All panels have a reflective barrier to help keep heat inside the spa.

ABS Base

We insulate under your spa too! ThermoBase has 3" of insulation between the cold ground and the bottom of your spa, adding more protection against heat loss from ground contact.

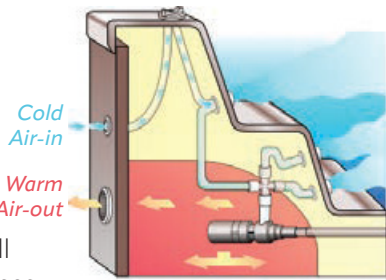


CO-GENERATED HEAT

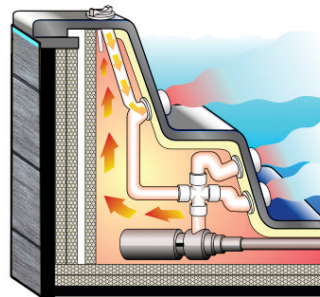
The Heater and all the Pumps in Every Hot Tub, by Every Manufacturer, Radiate a Great Deal of Heat.

Competitor's Full Foam Spas

All Co-Generated Heat is wastefully vented out to prevent overheating in the small compartment that houses all the pumps and the heater in a Full Foam Spa. Plus, each "Air Valve" on the hot tub draws in cold outside air cooling the spa water when the valve is open.



Compared to SpaEase Co-Generated Heat



SpaEase Hot Tubs utilize Co-Generated Heat to warm both the underside of the spa's shell and all the internal plumbing of the spa. Most importantly, this warm air is used on every "Air Valve" on all SpaEase Hot Tubs, significantly reducing your energy consumption.

VacuSeal COVER & LIFTER SYSTEM

Every SpaEase Designer Series Hot Tub comes with The VacuSeal Cover & Lifter System for the Ultimate in Efficiency.

The Bottom Hinge Design of our Patented VacuSeal Cover is the most effective reduction in Energy Consumption on hot tubs and how we lock in the heat.



Easy to Service...

Removable Wall Panels Reduce Service Costs on Your Bill

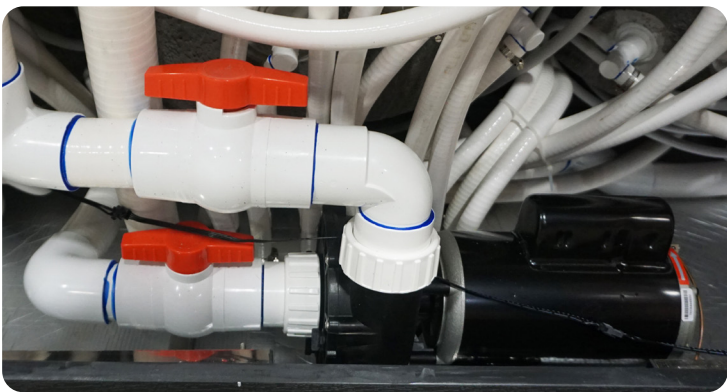
Not one, but all panels, on every wall, along with each layer of insulation, are designed to be easily removable. This unique concept, invented by SpaEase, along with our handy disconnect unions has made our spas simple and easy to service. Many of our competitors that sell "full-foam" spas make servicing the spa very expensive. Even the tiniest leak in a fully foamed spa could require days to repair, compared with minutes for a SpaEase.

SpaEase easy access design simplifies the removal of any component and our control panel provides diagnostic read-outs that assist in determining the cause of any malfunction.



Disconnect Unions for Easy Replacement

SpaEase installs two disconnect hand unions on every component so that a pump or heater can easily be replaced in a matter of minutes. Competitor's spas require draining, cutting the pipes, refilling, and testing the spa. SpaEase designs spas so that even its owner could replace a component.



Why We Don't Use Full Foam Insulation

Full Foam Spas are less expensive and easier to manufacture since they eliminate and/or significantly reduce the need for expensive fiberglass and resin. But they can be Very Expensive to the Owner.

VERY EXPENSIVE TO SERVICE

If a Full Foam Spa has a leak, it can take many hours to locate the leak, and searching for it can often create new leaks. Very few spa service companies will service Full Foam Spas, especially if they did not sell it.

VERY LOW RESALE VALUE

Because it is very difficult to determine if a Full Foam spa has a small leak, most spa companies will not accept it as a trade-in, and most homeowners are reluctant to purchase it.

ENVIRONMENTALLY UNFRIENDLY

Since most of the spa is foam, most town dumps will not accept it which makes it expensive and/or very difficult to discard.

PERFECT NESTING HOME FOR RODENTS

In cold climates many Rodents (mice, squirrels, carpenter ants, etc) and Garter Snakes can be found burrowed into the foam for the winter.



SpaEASE Keeps Your Water Crystal Clear

SpaEase 24/7 Filtration w/Independent Pump

We Filter 3 Times Faster and More Economically than Traditional Hot Tubs

Measuring the Quality of Filtration

The #1 factor in determining the quality of a filtration system is the number of times, in one day, 100% of the water passes through your filter cartridge. Traditional hot tubs use the low-speed function of the primary pump and filter the water for 4 hours twice a day. SpaEase filters the water 24 hours a day, every day of the year. SpaEase Designer Spas turn 100% of the water in a spa 3 times more often than Traditional Hot Tubs. This number determines how quickly your water will reach clarity after it has been used.

We Hide the Filter Cartridge Behind a Piece of Acrylic Artwork



Then We Backlight it Just for Fun

Benefits of 24/7 Filtration

A simple example is that when your hot tub water becomes cloudy, it could take a few days for the water to reach full clarity. With our SpaEase 24/7 System it could reach full clarity within a few hours.

Comparing Cost of Each System

Low-Speed on the Primary Pump used on Traditional Hot Tubs draws approximately 3.5 amps per/hour and runs 8 hours each day drawing a total of 28 amps per/day. The Independent Pump used on all SpaEase Designer Spas draws .8 amps per/hour and runs 24 hours each day drawing a total of 19.2 amps per/day.

Many Hot Tub Manufacturers offer 24/7 Filtration Systems as an option on their deluxe models and charge approximately \$600. SpaEase provides 24/7 Filtration as a standard feature on all Designer Series Spas.

Ozone Water Purification

Ozone is one of nature's most powerful sanitizers. It works 3,000 times faster than chlorine and is used today to sanitize most of the bottled water we drink. Many hot tub manufacturers offer 30 mg ozone as an optional feature on their spas. SpaEase provides an upgraded 60 mg Ozone as a standard feature on all our hot tubs.

Comparing SpaEase Hot Tubs to Traditional Hot Tubs

FILTRATION & WATER PURIFICATION	TRADITIONAL	SPA EASE
# of Times 100% of Water is Filtered in One Day	18	54
How Often Filter is Operating per day	8 Hours	24 Hours
Average Amount of Amps Drawn per/day	28 amps	19 amps
Cost for a 24/7 Filtration System w/Pump	\$600	Included
The Amount of Ozone produced per/hour	30 mg	60 mg

& Enhances Your Spa Experience

Hot tubs with Lighted Waterfalls, built-in Bluetooth Speakers, LED Lighting, Deluxe Pillows and Adjustable Jets help create a luxurious, relaxing experience, enhancing ambiance and entertainment for ultimate comfort and enjoyment of a Spa.



LED Lighted Waterfalls

Create a soothing ambiance with this LED Lighted Waterfall, featuring vibrant lights and cascading water for ultimate relaxation.



LED Fountain Streamers

LED fountain streamers add vibrant color and relaxation to your hot tub. These dynamic water features create a mesmerizing light show for ultimate ambiance.



LED Lighted Cup Holders

Create a soothing ambiance with this LED Hot Tub Waterfall, featuring vibrant lights for the ultimate in relaxation.



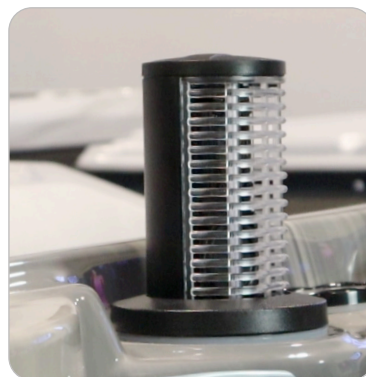
Perimeter Cabinet Lighting

Enhanced perimeter lighting, offering customizable colors. They create a relaxing, illuminated atmosphere for night-time enjoyment and relaxation.



Balboa Touch 2

Transform your user experience with our resistive touchscreen panel that looks and feels like a glass display.



Bluetooth Pop-Up Speakers

Enjoy music while relaxing with a built-in pop-up Bluetooth speaker for your hot tub. Seamlessly connects to devices, delivering crisp sound for a spa-like experience.



Bottom Drain

It's never been easier to drain your hot tub completely without having to finish using sponges to soak up the rest of the water in the bottom footwell.



Deluxe Pillows

Experience ultimate relaxation with our deluxe hot tub pillow, designed for comfort and support. These pillows are thick and cushioned for maximum comfort.



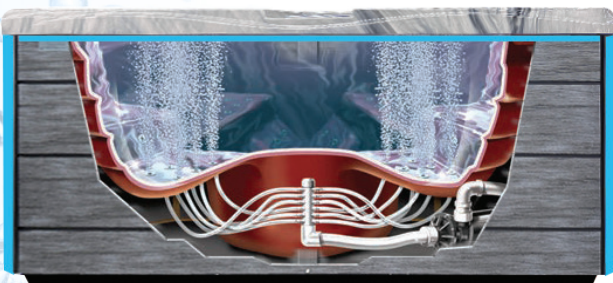
Air Jets Provide Relaxation

*Helping You Relax,
Relieve Stress &
Simply Have Fun*

Air Jets provide a gentler, more relaxing massage. Obviously a favorite for children but also a choice for many adults, especially those with sensitive skin and others that don't require powerful jet therapy.



Our Bubbling System And How It works



A powerful Air Pump draws the warm air from the interior of our Thermolnsulated Cabinet, through a manifold, to a series of specially designed air jets, that turn your entire spa into a bubbling oasis. The manifold ensures an even level of bubbling activity in all seating areas.

The comment we most often hear from adults *"It's Like Sitting in a Bucket of Champagne"*. From the kids its simply *"Turn it Up All the Way"*. I think there may be a little child in every one of us.

Today many major jetted bathtub manufacturers have discontinued water jets and only use air jets. Over 40% of SpaEase customers prefer Air Jets over Water Jets.



Unique Control Valve

Allows you to adjust the bubbling action from a light tingling massage to powerful bubbling action.

New England Journal of Medicine

"Subject reported improved sleep and an increased general sense of well-being..."

National Arthritis Foundation

"ideal environment for relieving arthritis pain and stiffness... relaxes tight muscles."

National Sleep Foundation

"soaking in hot water before retiring to bed can ease the transition into deeper sleep."

Water Jets Provide Therapy

The benefits jets provide are highly dependent on their location and their power.

Most manufacturers provide 1 or 2 pumps to serve up to 5 seating areas.

SpaEase provides up to 4 pumps and an adjustment valve in each seating area allowing each bather to independently control the intensity of their massage.



Neck & Shoulder Massage

Above water neck and shoulder jets that can easily be turned on or off along with an adjustable intensity valve. They are guaranteed to relieve the stress we all feel at the end of a difficult day.



Rain Jets on Your Back

Imagine the feeling of 36 tiny jets massaging every inch of your back and you don't need to say please, you simply press a button.



A Foot Massage

Once we learned a foot massage relaxes your entire body, we decided to include foot jets in virtually every seating area.



Advanced Recliner

Who said we couldn't turn a reclining chair into a full body massage that includes arm rests with jets where every baseball pitcher would love.

Valve to Adjust Intensity



Full Body Lounge

Stretch out, relax and find out how it feels to have jets massage almost every inch of your body with a convenient valve to adjust the intensity.



MAYO Clinic

"Peak heart rate was lower during hot tub immersion vs than for exercise..."

British Journal of Rheumatology

"study suggests an immediate and 6-month benefit of spa therapy in chronic LBP"

National Sleep Foundation

"soaking in hot water before retiring to bed can ease the transition into deeper sleep."



3 SEATING AREAS

Maui is the perfect choice for someone seeking a compact hot tub that is loaded with features. The 35" height allows it to pass through most any standard exterior doorway giving you choices most hot tubs cannot. Two lounges side by side allow both bathers to view the stars together and a cozy center seat transforms the Maui into a conversational seating area.

SPECIFICATIONS

Dimensions: 86" x 65" x 35"

Dry Weight: 507 lbs.

Water Capacity: 206 Gallons

88 Stainless Steel Jets:

- 76 Water Jets • 12 Air Jets

4 Pumps:

- 2 (3HP) Water Pumps
- 1 (.35HP) Filtration Pump
- 1 (700W) Air Pump

Required Electrical: 220V 60 Amp

STANDARD FEATURES

- Balboa Touch 2 Control Panel
- Adjustable Air Bubbling System
- VacuSeal Energy Saving Cover
- VacuSeal Cover Lifter
- Multi-Layer Thermo-Insulation
- Multi-Layer Aristech Acrylic Shell
- Stainless Steel Frame
- Ozone Water Purification System
- 24/7 Filtration w/Independent Pump
- Two Bluetooth Speakers
- Multi-Color Lighted Waterfall
- Multi-Color Water Streamers
- Built-In Lighted Cup Holders
- Ultra-Thick Built-In Pillows
- Insulated & Sealed ABS Base
- Bottom Drain in Footwell
- HT Chemical Starter Kit



SPECIAL FEATURES OVERVIEW

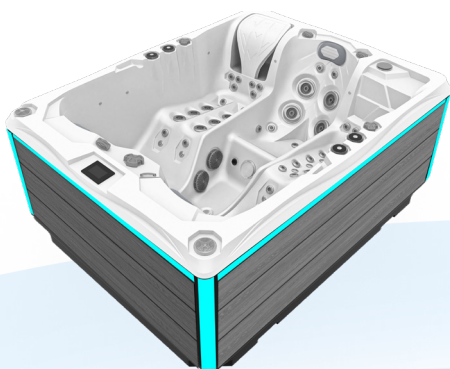


Lounge Choice

Each lounge is designed for a different height, while still providing each bather with an amazing full body massage. When all alone you'll find the joy in stretching out in one and or curling up in the other.

Opposite Center Seat

A favorite for many bathers as it raises you up slightly.



Horizontal Cabinetry

With perimeter lighting in a variety of colors to enhance your home's exterior.

AVAILABLE OPTIONS

- ConvertALift Automatic Lifter
- Choice of SpaEase Steps
- 2 Chemical Storage Drawers
- Choice of SpaEase Safety Rail
- SpaEase Beverage Table



ConvertALift Remote



Table mounts securely into the 5" Volcano Jet in the floor of the Spa to safely hold your beverage of choice.

5 SEATING AREAS

The Martinique is perfect for entertaining guests, especially when you add our removable beverage table. And for those wise enough to soak each morning all alone, you will enjoy trying to decide, each day, which seat you love the best. Each is designed to provide an amazing full body massage or turn on the bubbling system and escape into your own private comfort zone.

SPECIFICATIONS

Dimensions: 91" x 91" x 37"

Dry Weight: 838 lbs.

Water Capacity: 344 Gallons

123 Stainless Steel Jets:

- 111 Water Jets • 12 Air Jets

5 Pumps:

3 (3HP) Water Pumps

1 (700W) Air Pump

1 (.35HP) Filtration Pump

Required Electrical: 220V 60 Amp

STANDARD FEATURES

- Balboa Touch 2 Control Panel
- Adjustable Air Bubbling System
- VacuSeal Energy Saving Cover
- VacuSeal Cover Lifter
- Multi-Layer Thermo-Insulation
- Multi-Layer Aristech Acrylic Shell
- Stainless Steel Frame
- Ozone Water Purification System
- 24/7 Filtration w/Independent Pump
- Two Bluetooth Speakers
- Multi-Color Lighted Waterfall
- Multi-Color Water Streamers
- Built-In Lighted Cup Holders
- Ultra-Thick Built-In Pillows
- Insulated & Sealed ABS Base
- Bottom Drain in Footwell
- HT Chemical Starter Kit



SPECIAL FEATURES OVERVIEW

3 Reclining Therapy Seats

Each provides an incredible jetted massage for both your back, legs, and feet along with armrests for added comfort. The center seat offers an above water neck and shoulder massage along with a few extra jets to make it just a little more special.

2 Lounge Seats

Though one is slightly longer than the other, both offer an amazing full body massage and there is a conveniently located valve to control the intensity.

Designer Cabinetry

With perimeter lighting in a variety of colors to enhance your home's exterior.

AVAILABLE OPTIONS

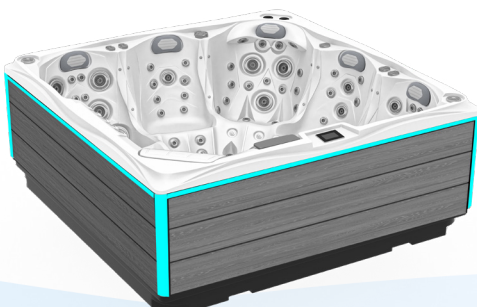
- ConvertALift Automatic Lifter
- Choice of SpaEase Steps
- 2 Chemical Storage Drawers
- Choice of SpaEase Safety Rail
- SpaEase Beverage Table



ConvertALift Remote



Table mounts securely into the 5" Volcano Jet in the floor of the Spa to safely hold your beverage of choice.





6 SEATING AREAS

The Santorini is perfect for those seeking a mid-sized spa that has it all. A lounge with an amazing full body massage and 2 deep therapy seats that include above water neck and shoulder jets, along with your own personal foot massage. Add in 3 more therapy seats loaded with jets along with blue tooth speakers, a lighted waterfall, streamers, and LED cup holders.

SPECIFICATIONS

Dimensions: 84" x 84" x 36"

Dry Weight: 750 lbs.

Water Capacity: 304 Gallons

94 Stainless Steel Jets:

- 80 Water Jets • 14 Air Jets

4 Pumps:

2 (3HP) Water Pumps

1 (700W) Air Pump

1 (.25HP) Filtration Pump

Required Electrical: 220V 60 Amp

SPECIAL FEATURES OVERVIEW

STANDARD FEATURES

- Balboa Touch 2 Control Panel



- Adjustable Air Bubbling System
- VacuSeal Energy Saving Cover
- VacuSeal Cover Lifter
- Multi-Layer Thermo-Insulation
- Multi-Layer Aristech Acrylic Shell
- Stainless Steel Frame
- Ozone Water Purification System
- 24/7 Filtration w/Independent Pump
- Two Bluetooth Speakers
- Multi-Color Lighted Waterfall
- Multi-Color Water Streamers
- Built-In Lighted Cup Holders
- Ultra-Thick Built-In Pillows
- Insulated & Sealed ABS Base
- Bottom Drain in Footwell
- HT Chemical Starter Kit

AVAILABLE OPTIONS

- ConvertALift Automatic Lifter
- Choice of SpaEase Steps
- 2 Chemical Storage Drawers
- Choice of SpaEase Safety Rail



ConvertALift Remote



The Perfect Lounge

Fully jetted for therapy, armrests for comfort, streamers for entertainment, and a convenient valve for adjusting intensity.

Rain Jet Seat

30 Jets cover your entire back area for the most incredibly relaxing experience all while getting a neck and shoulder massage.



Horizontal Cabinetry

With perimeter lighting in a variety of colors to enhance your home's exterior.



5 SEATING AREAS

The Mykonos was designed to provide relaxing comfort to every guest. Each seat includes jetted wrap around arm rests, ideal for those that spend hours on a computer. For those seeking an incredible neck and shoulder massage, you will find it in virtually every seat, along with a powerful jetted foot massage. But for those with an aching back, the Rain Jet Seat will always be your favorite.

SPECIFICATIONS

Dimensions: 91" x 91" x 36"

Dry Weight: 838 lbs.

Water Capacity: 344 Gallons

158 Stainless Steel Jets:

- 141 Water Jets • 17 Air Jets

5 Pumps:


3 (3HP) Water Pumps

1 (700W) Air Pump

1 (.35HP) Filtration Pump

Required Electrical: 220V 60 Amp

STANDARD FEATURES

- Balboa Touch 2 Control Panel 
- Adjustable Air Bubbling System
- VacuSeal Energy Saving Cover
- VacuSeal Cover Lifter
- Multi-Layer Thermo-Insulation
- Multi-Layer Aristech Acrylic Shell
- Stainless Steel Frame
- Ozone Water Purification System
- 24/7 Filtration w/Independent Pump
- Two Bluetooth Speakers
- Multi-Color Lighted Waterfall
- Multi-Color Water Streamers
- Built-In Lighted Cup Holders
- Ultra-Thick Built-In Pillows
- Insulated & Sealed ABS Base
- Bottom Drain in Footwell
- HT Chemical Starter Kit

AVAILABLE OPTIONS

- ConvertALift Automatic Lifter
- Choice of SpaEase Steps
- 2 Chemical Storage Drawers
- Choice of SpaEase Safety Rail



ConvertALift Remote



SPECIAL FEATURES OVERVIEW



Advanced Lounge

Massages virtually every inch of your body and includes a convenient valve that allows you to adjust the intensity.

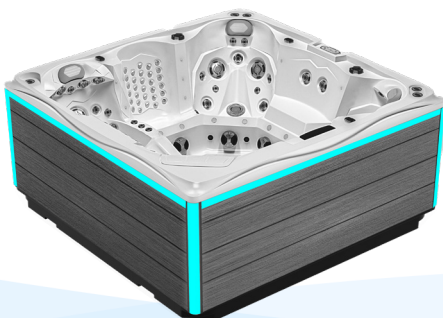
Neck & Shoulders

In the Lounge and in each of the Therapy Seats these above water jets magically relieve any pain along your neck and shoulders.



Horizontal Cabinetry

With perimeter lighting in a variety of colors to enhance your home's exterior.



4 SEATING AREAS

The Barbados is the perfect choice for entertaining another couple or for sharing it with your kids, where everyone has the best seat. Each includes wrap around jetted armrests that makes every past spa owner say, "why doesn't every spa have these". But we also hear that about "Rain Jet Seats", "Above Water Shoulder and Neck Jets", "Volcano Jets", and our "Bubbling Systems" as well.

SPECIFICATIONS

Dimensions: 84" x 84" x 37"

Dry Weight: 750 lbs.

Water Capacity: 304 Gallons

80 Stainless Steel Jets

• 72 Water Jets • 8 Air Jets

4 Pumps:


2 (3HP) Water Pumps

1 (.35HP) Filtration Pump

1 (700W) Air Pump

Required Electrical: 220V 60 Amp

STANDARD FEATURES

- Balboa Touch 2 Control Panel 
- Adjustable Air Bubbling System
- VacuSeal Energy Saving Cover
- VacuSeal Cover Lifter
- Multi-Layer Thermo-Insulation
- Multi-Layer Aristech Acrylic Shell
- Stainless Steel Frame
- Ozone Water Purification System
- 24/7 Filtration w/Independent Pump
- Two Bluetooth Speakers
- Multi-Color Lighted Waterfall
- Multi-Color Water Streamers
- Built-In Lighted Cup Holders
- Ultra-Thick Built-In Pillows
- Insulated & Sealed ABS Base
- Bottom Drain in Footwell
- HT Chemical Starter Kit

AVAILABLE OPTIONS

- ConvertALift Automatic Lifter
- Choice of SpaEase Steps
- 2 Chemical Storage Drawers
- Choice of SpaEase Safety Rail



ConvertALift Remote



SPECIAL FEATURES OVERVIEW

Neck & Shoulders Jets

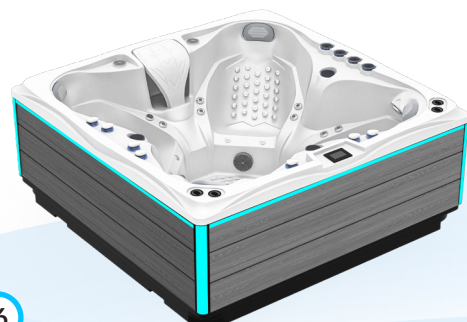
These powerful above waterline jets are positioned to target your neck & shoulders to ease tension.

Rain Jet Seat

30 Jets cover your entire back area for the most incredibly relaxing experience.

Powerful Volcano Jet

Positioned dead center in the floor of the spa and accessible from all seating areas.



Horizontal Cabinetry

With perimeter lighting in a variety of colors to enhance your home's exterior.



7 SEATING AREAS

The Tahiti is perfect for a family that plays together and those that love to entertain. The seats with pillows get the initial attention, but the Rain Jet Seat is a favorite for many, the raised up "Cool Down Seat" is a frequently used, and the Volcano Jet is ideal for anyone needing a phenomenal foot massage. Best of all relax and have a little fun with the Bubbling System.

SPECIFICATIONS

Dimensions: 91" x 91" x 37"

Dry Weight: 838 lbs.

Water Capacity: 344 Gallons

121 Stainless Steel Jets:

- 107 Water Jets • 14 Air Jets

5 Pumps:

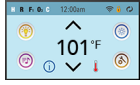
3 (3HP) Water Pumps

1 (700W) Air Pump

1 (.25HP) Filtration Pump

Required Electrical: 220V 60 Amp

STANDARD FEATURES

- Balboa Touch 2 Control Panel 
- Adjustable Air Bubbling System
- VacuSeal Energy Saving Cover
- VacuSeal Cover Lifter
- Multi-Layer Thermo-Insulation
- Multi-Layer Aristech Acrylic Shell
- Stainless Steel Frame
- Ozone Water Purification System
- 24/7 Filtration w/Independent Pump
- Two Bluetooth Speakers
- Multi-Color Lighted Waterfall
- Multi-Color Water Streamers
- Built-In Lighted Cup Holders
- Ultra-Thick Built-In Pillows
- Insulated & Sealed ABS Base
- Bottom Drain in Footwell
- HT Chemical Starter Kit

SPECIAL FEATURES OVERVIEW



A Different Massage in Every Seat

Imagine 2 reclining chairs giving you a warm water massage on your back, legs, and feet. Then move to the other side and get the most incredible neck and shoulder massage. And don't forget to smile.

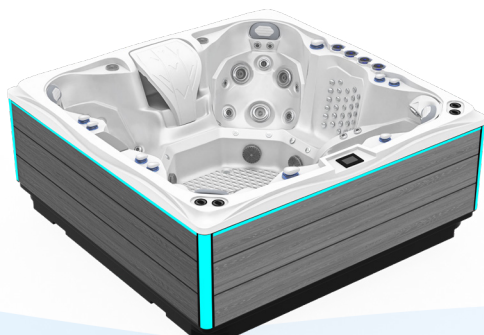
The Perfect Seat

Put your head on the pillow with knees elevated, touch a button and get a full body massage where you can control the intensity.



Designer Cabinetry

With perimeter lighting in a variety of colors to enhance your home's exterior.



AVAILABLE OPTIONS

- ConvertALift Automatic Lifter
- Choice of SpaEase Steps
- 2 Chemical Storage Drawers
- Choice of SpaEase Safety Rail



ConvertALift Remote



2 LUXURY THERAPY SEATS + 1 EXERCISE SEAT PLUS, BENCH SEATING FOR FAMILY & FRIENDS

The Olympian offers something for everyone. The Dual Therapy Seats allow a couple to escape and find the relief this luxury hot tub could provide. It also includes 4 Bluetooth Speakers and a Sub-Woofer making this Swim Spa truly an Entertainment Center as well. A Center Bench Seat between each Therapy Seat is perfectly located for those seeking to work-out. Exercise attachments are available for virtually any form of exercise you would find at a fitness center. A large Swim Area allows you to swim against a current or relax on floating lounge. Bench Seating makes it available to entertain up to 10 guests comfortably.

SPECIFICATIONS

Dimensions: 91" x 169" x 54"

Dry Weight: 2160 lbs.

Water Capacity: 1374 Gallons

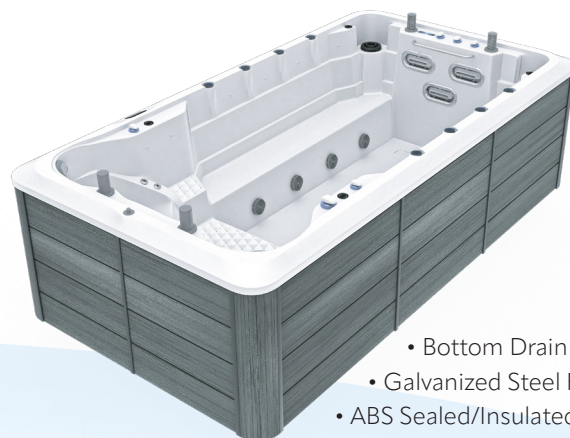
59 Stainless Steel Jets

5 Pumps

Required Electrical: 220V 60 Amp

STANDARD FEATURES

- Balboa Touch 2 Control
- VacuSeal Cover & Lift System
- 24/7 Filtration w/Circ Pump
- 36" Stainless Steel Rail
- 300 MGH Ozone System
- 8 Lighted Fountain Jets
- 4 LED Lighted Cup Holders



- Bottom Drain Outlet
- Galvanized Steel Frame
- ABS Sealed/Insulated Base

4 Pop-Up Bluetooth Speakers



2 Therapy & 1 Exercise Seat





THE SWIM CURRENT IS POWERED BY A TURBINE SYSTEM

The Olympian Pro offers all the benefits of our Olympian Swim Spa. Dual Therapy Seats, Center Exercise Seat, and Bench Seating for Guests, with one major upgrade. For those truly seeking a "Swim Machine" we have removed the traditional Swim Spa power jets and added a Turbo Engine in its place.

BENEFITS OF A TURBINE SYSTEM:

Smoother Water Flow

Provides a steadier flow of water offering a smoother swimming experience.

More Customizable

Adjustable water speed is ideal for those interested in building strength and endurance.

Quieter Sound

Perfect for those seeking a more peaceful and relaxing swimming experience.

More Natural Swim

Creates a more natural water flow that feels as if you were swimming in open water.

SPECIFICATIONS

- Dimensions:** 91" x 197" x 54"
- Dry Weight:** 2400 lbs.
- Water Capacity:** 1374 Gallons
- 56 Stainless Steel Jets**
- 2 Pumps**
- Turbine System**
- Required Electrical:** 220V 60 Amp

STANDARD FEATURES

- Balboa Touch 2 Control
- 24/7 Filtration w/Circ Pump
- 36" Stainless Steel Rail
- 300 MGH Ozone System
- 8 Lighted Fountain Jets
- 4 LED Lighted Cup Holders
- VacuSeal Cover & Lift System
Upgrade to Automatic with **ConvertALift**



Turbine Power is the Favorite of Serious Swimmers

Standard on All SpaEase Designer Series Spas

VacuSeal®

Cover & Cover Lifter

All Traditional Covers come with 2 sides held together with a top hinge that requires you to fold the cover in half than lift both sides, preferably using some type of cover lift system. And when you close the cover, you need to shift the cover to make certain it covers all the top surface of the hot tub shell, exposure to the sun can damage the spa shell.

Our patented VacuSeal System provides many benefits!



For Hot Tubs & Swim Spas

Easiest to Use

Our Patented Bottom Hinge Design on our VacuSeal

Cover allows you to open the cover in one motion and the VacuSeal Lifter with its pneumatic shocks make it quite easy. Closing it is just as easy, and most importantly when it closes, it always goes back to the original position so there is no need for shifting the cover when closed. This is benefit for hot tubs, but an even greater benefit for Swim Spas.



Saves You Money



Our Patented Bottom Hinge Seals the Cover to Your Spa to Prevent Heat Loss. Other Covers Need a Center Gasket which is where Heat is Lost, Costing You \$\$\$.



Converts Into a Canopy

Protection from the Sun, an Escape from the Rain, and a Little More Privacy.



Enhanced View When Open



Only Cover where you face the attractive exterior side.

Within months chemical fumes discolor the underside.

Converts Your VacuSeal Into an Automated System

*Opens Your Hot Tub Cover
or Swim Spa Cover
from Up To 100' Away
at the touch of a Button!*

ConvertALift is an option on all SpaEase Designer Series Spas



Provides Many Benefits to Your Spa

SAFETY



When You Close Your Cover it Automatically Locks Keeping Children Safe.

CONVENIENCE



VacuSeal + ConvertALift Allows You to Open Your Cover from In Your Home

FOR REMOTE SPAS



Helps Prevent Uninvited Guests at Vacation & Rental Homes from Using Your Spa

FOR CLOSING



Swim Spa Covers Require 2 People, With Our Cover, Only One is Needed

Available Options

CONVERT A LIFT[®] Automatic Cover Lifter for Hot Tubs & Swim Spas

Now That You Own a Luxury Spa with a VacuSeal Cover & Lift System that was included, Why Not Make it Fully Automatic!

Simply touch a button from in your home and your cover opens automatically.

Adds Safety, Protects Your Spa, & Makes Life Truly Convenient!



Canopy Arm

For VacuSeal Covers Only

Converts VacuSeal to a Canopy

Protection from the Sun, an Escape from the Rain, and a Little More Privacy.



Subwoofer

Your SpaEase Designer Hot Tubs and Swim Spas include Bluetooth Speakers! NOW YOU CAN ENHANCE THE SOUND WITH A DEEP RICH BASS. Designed to be installed within the interior of spa cabinet and wired to your spa pac.



Beverage Table

Now you can enjoy sitting alone or entertaining guests in your spa by having a convenient table for drinks, snacks, and yes even for an ashtray. Currently only available on the Maui and Martinique Models.

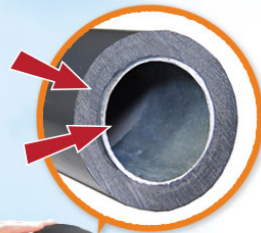


SPA EASE Access Rails

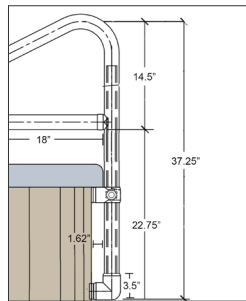
Makes Entry & Exit Safer

External 1/4" Thick Polymer Plastic

Internal Galvanized Steel Pipe

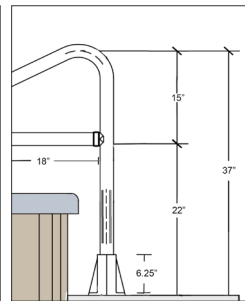


SM-36 SIDE MOUNT



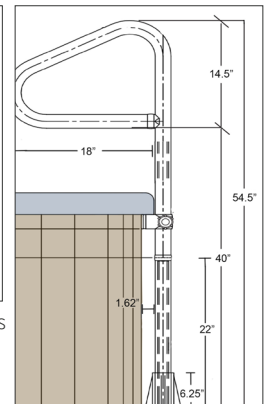
Ideal for any size Hot Tub or Swim Spa. Easy Install

DM-36 DECK MOUNT



Ideal for In-ground Hot Tubs or Swimming Pools.

DM-54 DECK MOUNT



Ideal for Portable Hot Tubs Up to 42" Tall

Built to Last Forever

The Only Rails Guaranteed Not to Rust, Pit, or Discolor. They will Look Brand New for Many Years, No Matter What the Climate is.

These Rails are used in Upscale Hotels and Disney World.

No Grounding Required

Lift-Turn then Drop & Lock

Slightly Lift the rail, swing it 180 degrees, and it locks in place providing Safety & Convenience. Ideal for entry and exit and use while in your spa.



Your Choice of Steps

Classic Step 26" W, 23" Deep, 14.5" H

Matching Wrap-Around Tread & Riser

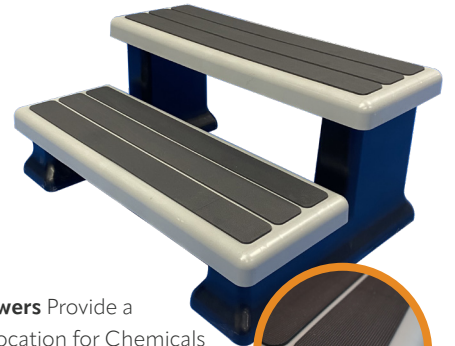
- Two-Tone Design Adds Value & Dimension
- Slip Resistant Treads
- Tested to Hold Over 800 lbs
- Easily Locks Together in Seconds
- Available in 3 Colors



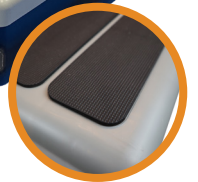
Designer Step 33.5" W, 26.5" Deep, 15" H

Stylish Design, Sturdy Construction

Wide enough for two adults & strong enough for four. This attractive Two-Tone Step includes black legs and a choice of Grey, Black or Espresso Treads.



Optional Drawers Provide a Convenient Location for Chemicals and Accessories. Improve the Spa Experience by Eliminating Having to Carry an Armful of Chemicals.



Soft Rubber Treads



Aquasizer

Underwater Treadmill

The Perfect Exercise for Swim Spas

Ideal for Swim Spa & Swimming Pools (Inground & Above Ground)

TRANSFORM INTO AN EXERCISE MACHINE

- Walk or Run at any pace.
- Go Forward & Backward
- Cardiovascular Workout
- Safe for All Ages
- No Motorized Equipment
- Build Strength & Endurance



Wheels for Transport



Easy Entry & Removal



Walk/Run at Your Pace

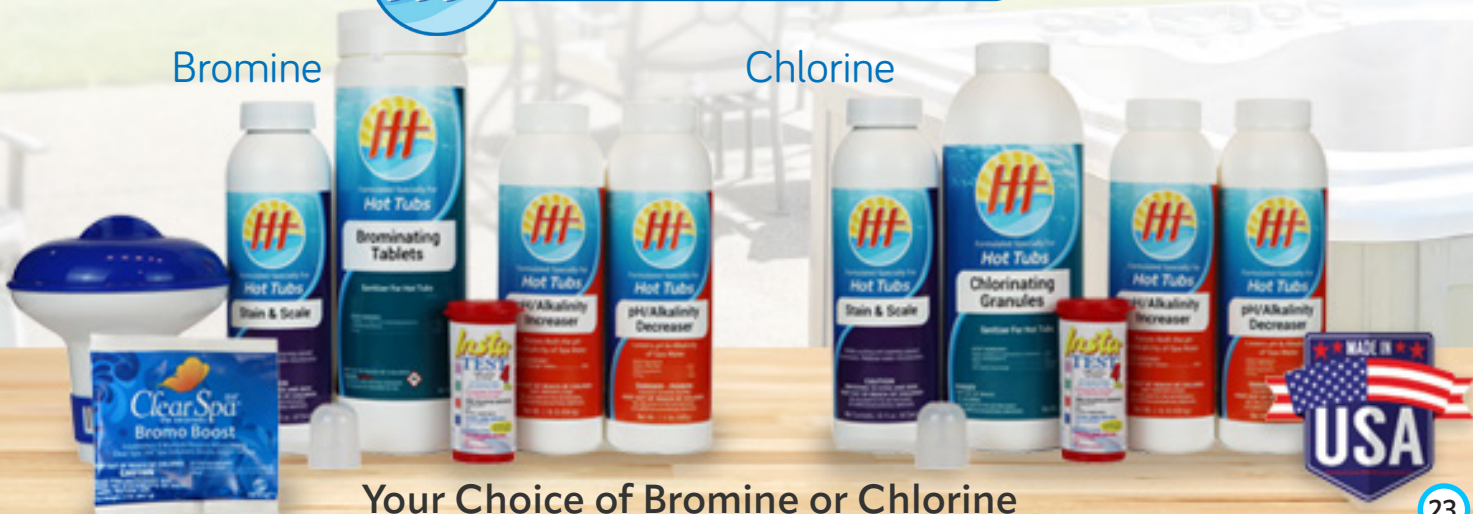
The Stainless-Steel Rail easily slides out and the Base can remain in the water for a full season, then remove, rinse off, and reinstall.



Chemicals Starter Kits

Bromine

Chlorine



Your Choice of Bromine or Chlorine



